

BEYOND GENTLING MASK

THE CHILDREN'S CENTER 2011-2012 IMPACT REPORT



« We all wear masks to hide our fears and struggles. But for the thousands of children we see at The Children's Center, those masks disguise neglect and abuse, trauma and hurt. Sometimes years of it.

The mask on the front cover tells one such story.

It was created by a young boy suffering from depression. He lived with his mother, father, and two sisters. The father often took illegal substances, which led to spousal abuse and disruption in the home.

The boy feared he would become like his father. He talked of feeling weak, helpless, of becoming a failure by not protecting his mother. He acted out in school, fought often, and experienced several suspensions.

He made the mask with one of our art therapists, molding it directly to his face. He explained that the dark base of the mask was how he felt, as if he were a shadow, powerless. The gold sequins were to hide his true self, so as not to worry his mother. His means of protecting her was to act as if nothing bothered him. The feathers were an afterthought of how he wanted to fly away with his mother and never look back.

At The Children's Center, our goal is to help children get beyond the mask. To help them heal and cope from the harsh realities and hurt they face, and equip them with the tools they need to grow and thrive.

Removing the mask

The fiscal year ending September 2012 brought many exciting milestones in our nearly 85 years of service to children and families in Greater Detroit.

The Children's Center Head Start Academy opened in Northwest Detroit, providing early learning opportunities to 300 children ages 3 to 5. Equally exciting was strengthening these young families through parent enrichment programs such as our Fatherhood Initiative. We know the investments we made in getting these children off to a healthy start will pay long-term dividends in their developmental and academic success.

Our after-hours Crisis Care Center opened on our main campus in Midtown Detroit; expanding our ability to serve children and families in crises, and divert them from costly emergency room care and hospitalization.

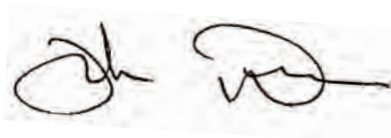
And true to our roots, we provided more than 7,500 children and their families with evidence-based mental health and trauma-informed clinical care to heal the hurt and maximize each child's ability to grow into a successful adult.

That's what our work is all about: helping each and every courageous child we serve to remove the mask of their mental health or behavioral health issues, help eradicate the stigma and misconceptions normally associated with mental illness, and to empower them to shape their own futures. We are grateful for our many supporters who join us in this work on behalf of children and families.

Sincerely,



Debora Matthews
President & CEO



John Dunn
Board Chair



Debora Matthews



John Dunn

Year in review

Our 2011-2012 report reflects on the positive impact The Children's Center has had on thousands of vulnerable children and families over the past year.

Our Crisis Care Center opened in February 2011. We saw demand quickly grow, and as a result, extended our hours of operation from 8am-8pm to 8am-12am. Our Crisis Care Center diverts more than 75% of the children seeking crisis care from costly hospitalization. We've also been able to reduce repeat hospital visits due to our timely clinical follow-up, which happens within 24-48 hours of discharge with every single child we see.

On Legislative Day in May 2012, The Children's Center transported 80 parents, guardians and children to Lansing. Participants learned about our State legislative process on the Senate and House floors. They enjoyed visits with Senators and Representatives, and shared their personal stories of success and challenge, while encouraging continued support and funding. The Children's Center also played a significant role in the passage of autism insurance legislation (see story on page 13), a tremendous victory for more than 15,000 Michigan children. Our families with autistic children were present to voice their concerns and observe the legislative process in the Senate.

In September 2012, The Children's Center Head Start Academy opened its doors to children aged 3 to 5 living in Northwest Detroit. At the end of the first school year, we're proud to cite many successes. We helped 68 children successfully transition to kindergarten. These children can recognize letters of the alphabet and several words. Many children who were previously nonverbal gained critical social skills. In addition, some of our children went to Washington D.C. to attend the Rosa Parks dedication service—and even met President Obama. Another program, our Fatherhood Initiative, engaged 137 fathers or male caregivers, encouraging and celebrating their participation in their children's lives. We also helped several families stabilize by connecting them to affordable housing and utilities assistance.

In October 2012, we launched an integrated health collaboration with Advantage Health Centers (AHC). AHC moved onto our main campus at 79 W. Alexandrine to provide families easier access to pediatric health care, avert medical and psychiatric deterioration in at-risk children and offer preventative health care solutions. AHC has a solid history of providing primary health care services to the medically underserved. It offers care to everyone, regardless of insurance status.

14,387

CHILDREN IN MICHIGAN
FOSTER CARE AT ANY
GIVEN MOMENT

32,463

MICHIGAN CHILDREN ARE
VICTIMS OF ABUSE AND
NEGLECT EACH YEAR

ONLINE

SCAN QR CODE WITH
SMARTPHONE TO VISIT THE
ONLINE VERSION OF THIS
IMPACT REPORT



The most important kind of freedom is to be what you really are. You trade in your reality for a role. You give up your ability to feel, and in exchange, put on a mask.
- JIM MORRISON



“Children are the
future of Detroit.
If we’re going
to heal Detroit,
we must first
heal the
children.”

DEBORA MATTHEWS

PRESIDENT & CEO
THE CHILDREN'S CENTER



HEALTHY BOY



A healthy child has a healthy body and a healthy mind. At The Children's Center, we believe you can't have one without the other. So, we treat mental, behavioral, and physical health—the whole child—on one campus.

That means our doctors and counselors work together as a team to meet our families' needs. Every screening, evaluation, and appointment for doctor care or mental health services takes place in one location. For families, that saves on drive time, gas, and coordinating time off work.

The impact of total care

Over the past fiscal year, The Children's Center has broadened its services and helped to influence legislation that makes total care possible.

The case studies on the following pages demonstrate the unique and inspiring ways our doctors, clinicians, and therapists are bringing better care to the children of Detroit.

Giving children a good head start

One of the best ways to ensure that young children from disadvantaged backgrounds have a chance to succeed in life is through Head Start programs.

Studies have shown that children enrolled in early educational programs are more likely to succeed academically and have less socio-behavioral problems, than children who don't have similar opportunities.

The challenge

The 48219 area of Detroit is one of many neighborhoods struggling to provide adequate early educational opportunities for children. The Children's Center created a Head Start Academy to address both the educational needs of the neighborhood and provide value-added mental health and community services.

The solution

The Children's Center opened the doors to its first Head Start Academy in the 48219 area on September 26, 2012, providing a HighScope curriculum and a learning environment that nurtures mental, emotional, and physical development.

The impact

Research shows that children who participate in HighScope preschool programs have higher earnings, are more likely to hold a steady job, commit fewer crimes, and are more likely to have finished high school than those who did not attend similar preschool programs.

We're proud to provide the 48219 community with this positive educational opportunity, as well as many value-added services including:

- Access to mental health services, onsite clinicians, speech therapists, and case managers
- Health fairs for adults, including healthy cooking classes, clothing and food drives, well-being and beauty care
- Fatherhood engagement programs with leadership and decision-making committees
- Onsite dental services for children and adults

Currently the school is fully enrolled with 286 students. We strive to have a significant impact on the 48219 neighborhood as a safe haven for children to learn, grow, and thrive.

36,505

MICHIGAN CHILDREN
AGES 3-5 ARE ENROLLED
IN HEAD START

100%

ENROLLMENT AT
THE CHILDREN'S CENTER
HEAD START ACADEMY

VIDEO

SCAN QR CODE WITH
SMARTPHONE TO LEARN
MORE ABOUT OUR
HEAD START ACADEMY



We wear the mask that grins and lies. It hides
our cheeks and shades our eyes.

- PAUL LAURENCE DUNBAR



Providing critical care in a crisis

When children experience a sudden emotional crisis, families often turn to the hospital emergency room as their first source of care.

For these children, the hospital experience can compound their emotional distress: wait times are often long, the nature of the environment causes additional anxiety, and the child might not receive the appropriate level of clinical care. It can also be exorbitantly expensive and a drain on hospital resources.

The challenge

The Children's Center sought to create an alternative to the ER, where children and families could receive immediate and proper care in a emotional or behavioral crisis or trauma situation.

The solution

The Children's Center established a Crisis Center in February 2012. The Crisis Center, which is open weekdays from 8 a.m. to midnight, is a safe, comfortable environment that provides an immediate walk-in alternative to the ER for children's mental and emotional crises.

The impact

Since its inception, the Crisis Center has serviced more than 100 children and families, and set the following benchmarks:

Access to immediate care. A child can be seen, diagnosed, and treated in as few as two hours, as opposed to nearly five hours in the hospital.

Fewer in-patient hospitalizations. Prior to the existence of the Crisis Care Center, 80% of children in crisis who were seen in hospitals were admitted. The Children's Center is dedicated to providing the proper care while diverting costly or unnecessary hospital stays. Since its inception, only 29% of the children seen by our Crisis Care Center have required in-patient hospital care.

Better allocation of costs. The average hospital stay hovers around \$5,700. For the same amount, children can receive outpatient services at The Children's Center and get access to every single service on campus for a month.

Professional follow-up. Whereas hospital care might begin and end in a single visit, The Children's Center issues a 24-hour follow-up call and provides a thorough course of aftercare.

80%

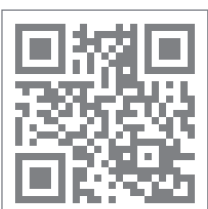
OF CHILDREN IN CRISES SEEN IN HOSPITALS WERE ADMITTED, PRIOR TO THE OPENING OF OUR CENTER

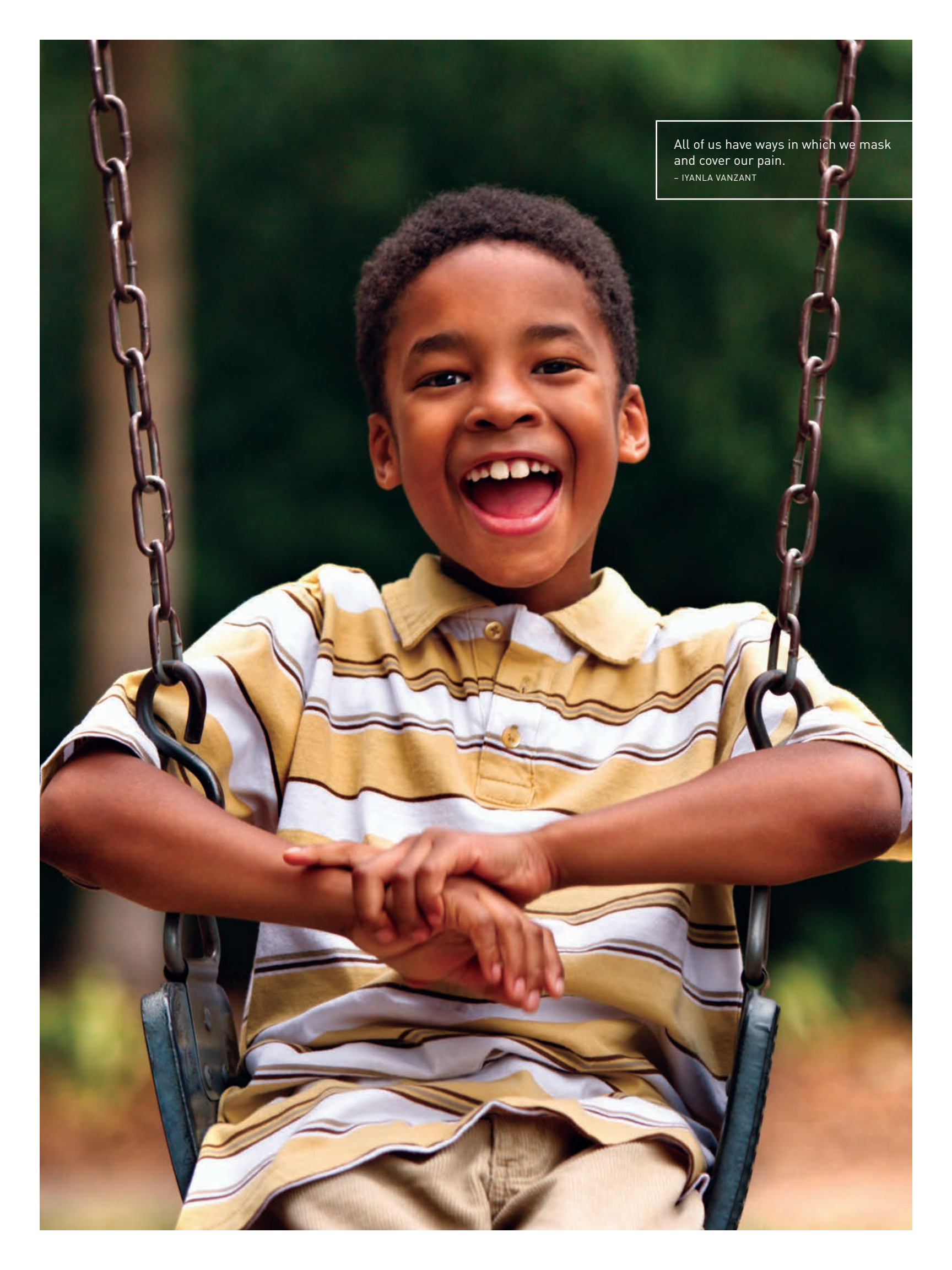
50%

FEWER CHILDREN REQUIRE IN-PATIENT CARE NOW THAT OUR CRISIS CARE CENTER IS IN OPERATION

VIDEO

SCAN QR CODE WITH SMARTPHONE TO LEARN MORE ABOUT OUR CRISIS CARE CENTER



A young boy with dark skin and curly hair is sitting on a swing, laughing heartily with his mouth wide open. He is wearing a yellow and white striped polo shirt and khaki pants. His hands are clasped together in his lap. The swing is made of metal chains and a dark seat. The background is a soft-focus green, suggesting an outdoor park setting.

All of us have ways in which we mask
and cover our pain.
- IYANLA VANZANT

Fighting for children with autism

In Michigan alone, more than 15,000 children suffer from some form of Autism Spectrum Disorder (ASD).

This year more children will be diagnosed with ASD than AIDS, cancer, and diabetes combined. It's become an epidemic—and an expensive one to treat.

The challenge

In 2012, the state of Michigan joined 34 other states in passing legislation guaranteeing insurance coverage for ASD. However, no provisions had been established for those children covered by Medicaid.

With behavioral therapies for ASD beginning at \$10,000/year, many ASD children who sought services from The Children's Center were unable to receive the interventions necessary to properly treat their disorder.

The solution

The Children's Center Pediatric Neuropsychologist Dr. Kara Brooklier worked to tackle the issue head on. Brooklier spent 14 months on a committee with other healthcare professionals writing legislation that guarantees Medicaid children receive coverage. These children would be qualified to receive intensive, evidence-based interventions with demonstrated successes in addressing the core symptoms of ASD.

The impact

With the passing of this legislation, more than 1,600 children with autism are expected to be treated in the next year. Many will receive comprehensive evidenced-based therapies at The Children's Center.

Dr. Brooklier notes that in short time since the legislation passed, she has seen an increase in the number of younger children receiving treatment, which gives her hope.

"More than 70% of the kids we treat early are able to transition into the general mainstream and remain there," she says. "That's a great outcome for everyone involved."

15,000

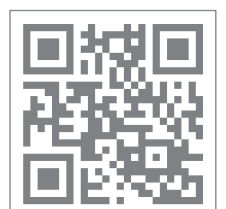
MICHIGAN CHILDREN SUFFER FROM SOME FORM OF AUTISM SPECTRUM DISORDER

70%

OF CHILDREN TREATED EARLY TRANSITION SUCCESSFULLY INTO THE GENERAL MAINSTREAM

VIDEO

SCAN QR CODE WITH SMARTPHONE TO LEARN MORE ABOUT OUR ASD PROGRAM



Always guarding one's real, precious self
in a cocoon of tranquility within a thousand
masks. Life itself had become a secret affair.

- MARY BALOGH



Our clinicians
help heal the hurt.
Here's how.



“Several children come to us frightened and traumatized from homes devastated by mental and physical abuse and neglect. We use art therapy as a way to help children identify and understand the source of their pain. Then we can help them begin the healing process.”

- Cindy Read, Art Therapist, MEd, ATR-BC, SW

“Being a clinician at The Children’s Center allows me to meet with troubled children and families, listen without judgment, and work with them toward solutions that positively impact their daily lives.”

- Katherine Strohl, LLPC, Clinician, P.A.C.E. Program

“In my work with hurting children and youth, my job becomes one of a visionary, who helps them to realize their potential and work through the pain to move them forward.”

- Holly Snell, LLMSW, CTS, Clinician, Foster Care Clinical Program

“One of my responsibilities is to ensure that parents understand their child’s diagnosis and recognize that the symptoms of that diagnosis are not who the child is; the child cannot help it. We offer hope for the future.”

- Lisa Weber, Clinician, General Outpatient

“Families come into our office so overwhelmed and sometimes feeling helpless. Many have sad faces and ask, ‘Where did I go wrong?’ or ‘What did I do to cause this problem?’ It’s my job to turn those frowns upside down.”

- Lora Maxon, Clinician, K.I.D.D.S. Program

“Children who come to our Crisis Center are in urgent need of support. We help de-escalate the situation, actively listen with compassion and give them a voice without judgment. Just showing that someone cares is often enough to start the healing process.”

- Sharon Williams, B.S.W., Care Manager, Crisis Care Center



Statement of activities

Year ended September 30, 2012

Public Support and Revenue

Behavioral Health Services _____	\$15,049,444
Child Welfare _____	4,676,497
Head Start (Education) _____	524,201
21st Century After School Program (Education) _____	460,008
Philanthropy _____	2,537,275
Investments _____	457,411
Total Public Support and Other Revenue _____	\$23,704,836

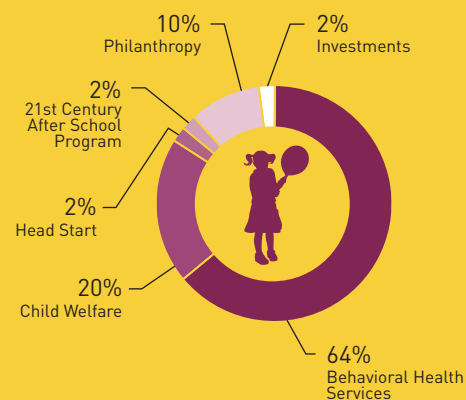
Expenses

Program Services _____	\$17,475,919
Administration, Management and General _____	3,483,252
Fundraising _____	551,189
Total Expenses _____	\$21,510,360

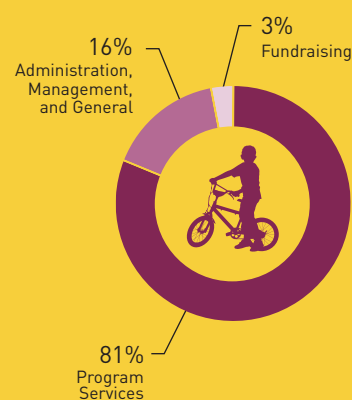
Programs are funded, in part, by the Detroit Wayne Mental Health Authority through CareLink and ConsumerLink, Wayne County Health & Family Services Head Start, and by the Michigan Department of Human Services.

Contributions to The Children's Center are tax-exempt under US IRS code 501(c)(3).

Operating Revenue



Operating Expenses



Program demographics and statistics

More than 100,000 children in Greater Detroit are vulnerable to the effects of mental health disorders, abuse, neglect and poverty. Together with our community partners, The Children's Center offers solutions that address the mental and behavioral health, physical health, abuse and neglect, and developmental disability challenges currently faced by tens of thousands of Detroit children.

1 in 5 children have a diagnosable mental disorder



Less than 50% of greater Detroit's children arrive to kindergarten ready-to-learn

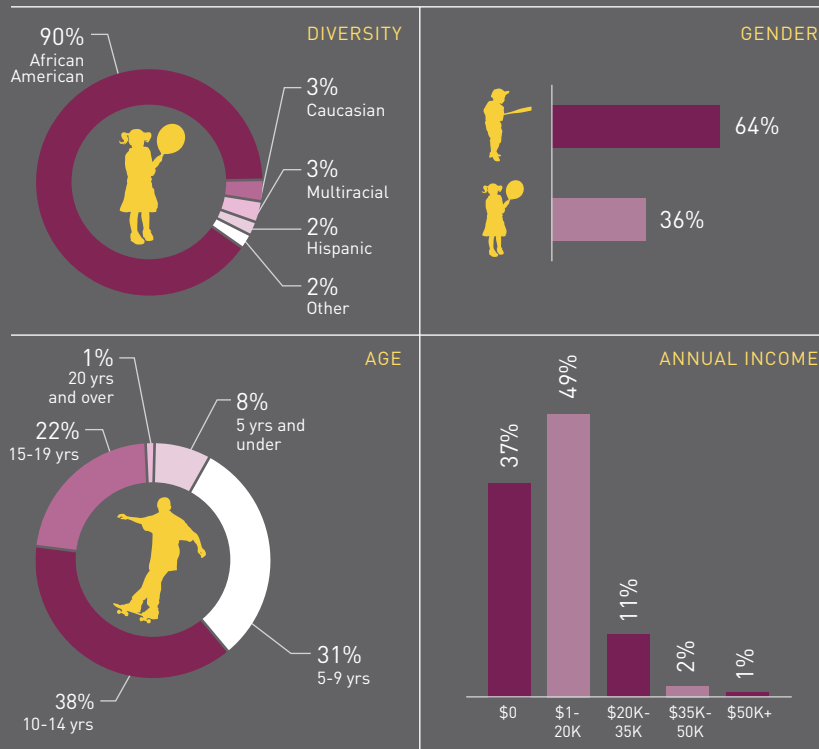


Autism is the fastest growing diagnosis in the country:
1 in 50 children
(1 in 33 for boys)



Every 28 seconds a child is placed in foster care

Every 18 minutes a child is abused or neglected



We invite you to #TAKETHETOUR. Give us an hour, and we'll show you why "Children Are the Heroes" at The Children's Center. You'll hear stories of courage, bravery, and empowerment—how children have healed and thrived through adversity. Give Holly Soranno a call at 313.262.1220.

Watch video

SCAN WITH SMARTPHONE



Volunteer leadership

This fiscal year was an economically challenging time throughout the region. We are grateful to our dedicated board members for their passion, discipline, and leadership – guiding us successfully through the year without compromising our long-term vision.

There was no one more dedicated than our beloved board member Frank Couzens III, who passed away September 19, 2012. Frank was the great-grandson of The Children’s Center Founder, Senator James Couzens.

In addition to his board service, Frank was Senior Vice President of Marketing for Jackson Dawson Communications. He was respected and appreciated by team members throughout Jackson Dawson and Ford Motor Company alike, for his unwavering loyalty, intuitive finesse, and dedication. He was regarded as a passionate leader by everyone who worked with him. The concept of working “shoulder to shoulder” was a philosophy he affirmed and embraced.

Board of Directors 2011-2012

BOARD OFFICERS

John J. Dunn, *Chair*
Renee Prewitt, *Chair-Elect*
Gaylord Creedon
Charles Edmonson
Denise A. Fleckenstein
Glen W. Flowers
Elena A. Ford

Tina V. Ford
Lisa V. Ford
Anthony A. Foust
Daniel M. Frank
Stacey A. Gray
Robert A. Karbel, Esq.
Chui Karega, Esq.

Douglas L. Maibach
David R. Reich
Erick Reickert
Douglas A. Rich
Ruth Zinn

BOARD OF DIRECTORS

Deborah L. Allen
Marianna Bailey
Marquita Bedway, Ph.D.
Joan Budden
Lindsey Ford Buhl
Anthony M. DiPonio
Katie Dirksen

H. Jeffrey Dobbs
Joseph W. Eatman
Wilhelmina J. Giblin
Hali Giessler
Susan R. Joseph
Joseph E. Klecha
Jason A. Lambiris

Elizabeth Luckenbach, Esq.
Marilynn Magreta
William D. Marsh
Michael V. Marston, Esq.
Rodman N. Myers, Esq.

LEADERSHIP TEAM

Debora Matthews
President & CEO
George Winn
Chief Operations Officer

Robert Blumenfeld
Chief Financial Officer
Cecelia Astorga-Switzer, M.D.
Chief Medical Officer

Nabeleh Ghareeb
Chief Administrative & Strategy Officer
Tammy Zonker
Chief Philanthropy Officer



Mr. & Mrs. Frank Couzens



A close-up photograph of a woman with curly hair smiling and holding a young girl. The girl is wearing a pink top with a decorative lace collar. The background is dark with some foliage and a blue sky. The text "Thank you for sharing our passion" is overlaid in white on the right side of the image.

Thank you
for sharing
our passion

A message to our donors

Dear Friends,

We are grateful for the care, compassion, and commitment you show our children and families. While many of us are feeling growing hope for economic recovery throughout the region, the majority of children and families served by The Children's Center are plagued by mental illness traumatic abuse and neglect; compounded by chronic poverty.

For these vulnerable children, hope comes from knowing someone cares. Your care and compassion may show up as a new backpack stuffed with supplies, just in time for the first day of school. Your commitment may be demonstrated by your financial support of funding gaps in our evidence-based programs and services.

The hope in our children grows stronger with every therapeutic milestone they achieve. Your generosity is the source of that hope.

Thank you partnering with us in empowering more than 7,500 children and families to shape their own futures.

Sincerely,



Tammy L. Zonker
Chief Philanthropy Officer

The Village of Giving

The Village of Giving is a select group of individuals and businesses that have pledged their support through a multi-year gift to The Children's Center.

VISIONARIES — ENSURING A SAFE HOME (\$50,000+)

Lindsey Ford Buhl and
Thomas Buhl
Marilynn and Gregory Magreta
Karen and William Pulte
Erick and Lady Susan Reickert

CHAMPIONS — HELPING TO HEAL THE HURT (\$25,000+)

Jana and Stephen Brownell
Jeff Dobbs and Roshann Parris
Tina and Gordon Ford
Daniel and Patricia Frank
Denise and James Jacob

GATEKEEPERS — CREATING A HEALTHY START (\$5,000+)

Gus Andreasen and Jennifer Zinn
Apex Digital Solutions
Cecilia Astorga-Switzer and
James Switzer
Nanci and John Ballantyne
Chris Beard and Scott Tryon
Marquita Bedway and Al LaHood
Barbara Binkley
Robert and Lori Blumenfeld
Greg Bockart
Carol Bosche' and James Wasmuth
Andrew and Lisa Boschma
Patrick Bosworth
Joan and Doug Budden
Shawn Byrnes
Robert and Sibyl Chavis
Keith and Shelly Chene
Linda Cobb-McClain and
John McClain
Helen Coleman

Comer Holdings LLC
Jill and J. Lewis Cooper
Dorothy and Raymond DeBates
Raymond DeBates III
Andrew and Linda Dunn
John and Denise Dunn
David and Sue Duprey
Chris and Karin Elias
Mary Sue and Paul Ewing
Mr. Douglas W. Ferrick
Denise Fleckenstein and
Dave Richards
Anthony and Julie Foust
Patricia and Dainforth French
Nabeleh and George Ghareeb
Stacey Gray
Antonia and Joseph Grinnan
Angela and John Hardison
Mike Heneka
Michelle and Jeff Henning
Steven and Kate Jacob
Rajendra Kanneganti
Susan and Kenneth Kirchner
Joseph Klecha
Keith Koeppen
Peter and Margaret Kross
Jason and Kelli Lambiris
Stacy LeVigne
Susan and Mark Lichterman
Liz Luckenbach
Douglas and Carole Maibach
William and Karen Marsh
Mae Martin
Debora Matthews
Nancy McClosky
Derine and Milton McCrory

MetroPCS Corporate Offices
Jeremy Modell
Greg and Tammy Moore
Joan Patrick-Morris and
Nathaniel Morris
Paige and Brian Peabody
Renee Prewitt
Douglas and Margaret Rahaim
Lisette Reed
David Reich
Kimberly Reich
Douglas and Kelly Rich
Shawn Robinson
Tina Sanders
Serena Sharer
Diana Sikes
Crystal T. Smith
Nancy Stermer
Christy Thaxton
LaShanda Thomas
Gerald and Linda Valka
Anne Vanker and Thad Mac Krell
Mary Jane Vogt
Cathy and Richard Walker
Valerie Warren
Nicole and Thomas Stallworth
Jean Wersching
Cheryl and Richard Wesen
George and Verita Winn
Dorothy and George Wrigley
Maria Young
Ruth and Frank Zinn
Tammy Zonker

A message to our corporate and community partners

We are grateful for the generous contributions of time, expertise, and financial support we receive from our philanthropy partners. These companies and civic organizations are instrumental in ensuring the children and families we serve get the critical resources they need to break the cycle of abuse, neglect, trauma, and mental health challenges they're facing.

Each of our philanthropy partners brings enthusiasm and hope to the children and families we serve. We'd like to acknowledge three organizations that have supported The Children's Center for more than a decade, with cumulative contributions valued in excess of \$1,000,000.

Ford Motor Company support dates back to 1929, when U.S. Senator James Couzens, a former General Manager of Ford Motor Company, founded the agency. Now, nearly 85 years later, Ford Motor Company, Ford Motor Company Fund & Community Services, and members of the Ford family maintain a strong commitment to The Children's Center and the families we serve in Greater Detroit.

Microsoft Corporation has been a valuable partner of The Children's Center for many years. In 2012, Microsoft awarded an unprecedented gift of software licenses, training, and support valued in excess of \$1,000,000. In addition, Microsoft employees have been passionate volunteers, donors, and advocates.

Tau Beta Association has been a generous, long-time partner in serving Greater Detroit's vulnerable children and families. Tau Beta members' passion and heart-felt benevolence for children and families in need is truly inspiring. This exceptional group provides more than 300 hours of volunteerism annually, in addition to financial support for the Tau Beta Center for Discovery, The Children's Center Head Start Academy, KIDDS Summer Camp, and CC's Boutique.

Individual and corporate donors

The following made contributions between October 1, 2011 and September 30, 2012. If you have made a gift and we inadvertently omitted your name or acknowledged you incorrectly, please accept our sincerest apologies and contact us.

JAMES COUZENS – HERITAGE SOCIETY

The James Couzens Heritage Society recognizes individuals who have included The Children's Center in their estate plans.

Jane Levy Endowment Fund

Angela & John Hardison

Debra Matthews

Denise Fleckenstein

Benjamin C. Maibach, Jr. Trust*

RM Freedman Trust*

William & Karen Marsh

BENEFACTORS (\$50,000+)

Ben C. Maibach, Jr. Trust

Detroit Auto Dealers Association

Elena A. Ford

Ford Motor Company

Tau Beta Association

ADVOCATES (\$25,000 - 49,999)

Behavioral Health Professionals, Inc.

Ford Foundation

Ford Motor Company Fund

Lisa V. Ford and William C. Ford, Jr.

Elizabeth, Allan, and Warren

Shelden Fund

Siemens PLM Software

Summit Polymers, Inc.

FOUNDERS (\$10,000 - 24,999)

Arts, Beats & Eats Foundation

BASF Corporation

Camerica Bank

Frank and Robin Couzens

Denso International America, Inc.

Detroit Lions Charities

Detroit Wine Organization

Jaffe, Raitt, Heuer & Weiss

Martin and Sabrina Mayhew

Meadowbrook Insurance Group

Microsoft Corporation

Roger and Rosie Ouellette

PVS Chemicals, Inc.

Quicken Loans

Team Detroit

SUPPORTERS (\$1,000 - 9,999)

3M General Offices

Adams Outdoor Advertising

Derek and Tiffany Albert

Deborah Allen

American Express

Anonymous Donations

Autism Alliance of Michigan

Jeff Baker

Katie Balesky

Bank of America Matching Gifts

Barton Malow Company

Mike and Lisa Barton

Mary and Richard Berg

Best Foundation

Melany Bigham

Larry Blackburn

Blue Cross Blue Shield of Michigan

Larry Bobbitt

Michael Boyle

Maureen and Tony Bromwell

Dr. Kara Brooklier and

Michael Cummins

Jennifer and Brendan Buckley

Caesars Windsor

Ann Campbell

Tammy Capone

William R. Chapin

Denise Christy

Susan Clark

Raymond Cochran

Combined Federal Campaign

Gaylord and Betsy Creedon

Daughters of The American Revolution

Larry Denton

Dorothy Deremo

Detroit Lions Charities

James DiPaola

Dirksen Family Charitable Gift Fund

Paul Dougan

DST Industries, Inc.

Jay and Linda Eastman

Cindy Eggleton

Ewie Co., Inc.

Fifth Third Bank

Ford African Ancestry Network (FAAN)

Christine and Jeff Forester

Willette Fowler

Douglass and Betsy Fox

Vince Fulton

Michael J. Garavaglia

Wilhelmina and Paul Giblin

Tom Giftos

David and Laura Gutierrez

Tom Hafke

Colleen Haley

Hamilton Anderson Associates

Rainy Hamilton

Eric Hardy

Timothy Haubenstricker

Christopher Healy

Henry Ford Health System

Jeff Heuer

Clarence and Jack Himmel Foundation

Holden Fund

Anne and Gilbert Hudson

Richard Hyrb

Imperial Beverage

International Bridge Company

International Healthcare Consultants, Inc.

Individual and corporate donors

SUPPORTERS (continued)

ITC Holdings Corp
Jackson-Dawson
Sharad and Elizabeth Jain
Linda Jamrosy
Jana Johnston
Shirley Kaigler
Kazumasa Kimura
Randy Koenigsknecht
Lawrence and Jackie Kraft
Lee Hecht Harrison
Luhtanen-Howes Charitable
Foundation, Inc.
Macquarie Equipment Finance
Employees
Macquarie Group Foundation Limited
Ryan Maibach
Stephanie and Steven Master
Mark McCauley
Paula McClellan
Patrick and Carolyn McNamara
Metro Solutions
Michigan Regional Council of Carpenters
Martin and Judy Miller
Monica Miller
Deri Mitchell
Cassandra Moran
Kathleen and James Mullins
Mary and Michael Naber
Northern Trust Bank, FSB
Tom Nowland
Pitt Charitable Trust
Mary Plaisance
Polk Foundation
James Polson
Tom Porter and Anne Ballew
Rodney Prater
Andrew Price
Priority Health
Robert Prostko
R.H. Bluestein & Company
Rasul Raheem

Kelly Rankin
Edmund Raubolt
Nancy and John Renick
John Riley
RM Freedman Trust
Barbara Rogers
Kirk Roy
Shant Saroukhanian
Schechter Benefits Advisors
Sepetys & Associates LLC
Susan Sherer and Dave Steinke
Michael Smith and Mary Williams
Chuck and Vicki Snearly
Special Events Rental
Judy Staples
Ellen Stephens
Elaine Stermer
Technosports Creative
Time Inc.
Steve and Stacey Tuohy
W3R Consulting
Equilla Wainwright
Donna Walton
Margaret Warner
Weichert Realtors/Cass Realty
Windsor Essex Development
Commission
Margaret and John Woodhouse
Zachary and Associates

FRIENDS

Abbott Nicholson, P.C.
Steven Abbott
Abc Student Transportation, Inc
Janisse Abrams
David Adams
Matthew Adams and Elizabeth Secord
William Adams
Terence Adderley
David Adler
Aerotek - Southfield Staffing Location
Michael Agnello

Hanan Ajluni
Maximillian and Alexandra Akemann
Katharine Albers
Colleen Allen
Diana Allen
Wilhelmina Allen
Ally Financial Inc.
Nicole Aloe
Dana Alpern
American Express Charitable Fund
Christine Anderson and Michael McGrath
Yvette Anderson
Mary Lu Angelilli
Ryan Angott
Ann Arbor Automotive
Bettye Arrington-Martin and
Jack Martin
Helen Arsenault

B

Frances Babbitt
Gretchen Bachman
Cathie Badalamenti
Marianna and Bennie Bailey
Reginald and Kasia Bailey
Baker & Company Enterprises, Inc.
Robert and Alicia Baker
Robert Baker
Brian Balasia
Carolyn Ball
Cassi and Josh Barron
Brian Bartes
Marla Bartoi
Mark Baughman
Mary Beth Baumeister
Raymond and Grace Bazmore
Carole Beach
Karl and Pamela Bell
Sharon Bellinger
Bemis Elementary School
Benmar & JD Warehouse
Dave Benedict

Individual and corporate donors

FRIENDS (continued)

Kimberly and James Berry
Black United Fund of Michigan, Inc.
William Blaylock
Terry Bone
Cynthia and Julian Bowen
Marletta M. Boyd II
Kathleen Brazzle
Bread of Heaven Ministries
Kelly Breckenridge
Barbara and Leo Brennan
John Brennan
Patricia E. Breslin
Cathy Brock
Kevin and Catharine Broderick
Nicole Brown
Stephen Brown
Kenneth Bruchanski
William Brukoff and Ada Kerwin
Jennifer and Ralph Bryant
Chris Buchanan
Jennifer and Thomas Buda
Sean Bumstead
Darin Burns
Lisa Butler
Kevin Byrnes

C

Dede and Brian Cadieux
Joseph Callahan
Dorothy Campbell
Sarah Cantu
Marisa Carandino
Tim and Lorraine Carless
Roxanne Carr
Michael Carroll
Perry and James Carroll
Nancy Carty McDevitt
Dana Casson
Timothy Cenowa
Maureen Cervone
Robert and Rose Chaldecott

Suzanne Chandler
Amy Chesterton
Gerald Chiddick
Marshella Chidester
Jennifer and William Chope
Eric Cionka
Elbert Clark
Scott Clemons
Megan Clor and Jack Scidluna
Anthony Colarossi
Crystal Coleman
Daniel Connell
Martha Connolly
Mary and Robert Conway
Doree Cook
Heath Cook
William Cook
Ann and Ralph Cooper
Mark Cooper
William Corfield
Correll Associates
Lynda Crawford-Parham
Maria Cross
Roberta Cross
Susanne and Christopher Crysler
George Cuff
Glenn Curtis
Martin Cygan

D

John Daly
Kathy Davidson
David Davis
Sharon Davis
Mary Jo Dawson
Maria and Alfonso DeFrancisco
Scott Delcomyn
Dave Delia
Tim Demos
Dental Spa
Detroit Diesel Corporation
Peter and Peggy Dettlinger

Dawn Dib
Suzanne Dibble
Ronald Dickerson
Kerry and Diane Dillard
Jennifer and Richard Dirksen
Katie Dirksen
Rosemary Dirksen
Donald and Jennifer Dismuke
Mason Dixon
Robert Djurovic
Hammie Dogan
Bryan Domagalski
Kenneth Donaldson
Shelia Donaldson
Dave Donoghue
Carole Donovan
John and Alicia Donovan
Rachele Downs
Richard Dusky

E

Myra Ebarb
Marjorie Ebejer
Madalyn Eberhardt
Charles and Patricia Edmonson
Benjamin Edwards
Charles Edwards
Hilrie Edwards
Viola Edwards
Lauren Eisbrenner
Alex and Lilian Erdeljan

F

Porscha and Kevin Fair
Jennifer and John Fauster
John and Sharon Ferchill
Jeff Ferguson
Lynn Ferris
Sandy Fester
Maureen Finnigan
David and Jennifer Fischer
Bill Fisher
Laura Fishman

Individual and corporate donors

FRIENDS (continued)

Jon Fitzgerald
Erin Fitzgibbon
Celeste and Hans Flick
Scott and Amy Flood
Linda Flower-McCann
Shirley and Peter Fortune
Michelle Foster
Mary Foucard
Kristine and Eric Francois
Tonia Franks
Kenneth and Jennifer Fruehauf

G

Pamela Galloway
Jeannine P. Gant
Javier Garcia
Randy Gasser
John and Cyndi Gave
GE Foundation
Derek Gemmel
Katie Giesting
Susan and William Gilbride
Walter and Carol Giles
Shawn Gill
David and Deborah Gillespie
Pierre Gilliam
Allan Gilmour and Eric Jirgens
Rebekah Gilroy
Joella Gipson
Douglas Glazier
Andrea Glos
Karla Goetz
Lynda Gordon
Devin Gough
Irene Grabowski
Alan Grams
Steven Grant
Betty Gray
Carolyn Gray
Kelly Gregory
Tera Griffin

Thomas and Elizabeth Griffith
Jean Griggs
Michael Grodus
Lynn Gross

H

John and Dana Hahn
Tamara Hairston
Molly Hall
Terence Hamilton
Dennis Hanson
Daniel Harmon
Jennifer Harmon
John Harris
Albert Heiter
Theresa Henderson Jackson
Maurice Henderson
Mary Jo Hermiller
Jennifer Hichme
Mark and Janette High
Hill PTO
Fred Hill
Shawn Hill
Charmaine Hines
Janet Hirth
Rita Hoekstra
Alix Hollis
Patricia and Kenneth Hollowell
Honest John's Bar & Grill, Inc.
Lynne Hopkins
Angela Horvath
Hour Media, LLC
Becky Howard
Julie Howe
Dennis Howell
Lisa Howze
Arthur Hudson
Gene Hudson
Laura and Charles Huebner
Kevin and Jackie Hurley

I

Therese Iglesias

Brian and Martha Ingalls
Iroquois Avenue Christ Lutheran

J

Rizwan Jafry
Alesia James
Jean Wright and
Joseph L. Hudson Jr. Fund
Delia Jeter-Walker
Jean and Ollie Johnson
Kevin Johnson
Linda Johnson
Jason Jones
John and Ruth Jones
Tonia Jones
Jerry Jones-Davis
Lee and Jane Juett

K

Dina Kakish
Alissa Karbel
Robert and Hazel Karbel
Rachel Kasul
Joe and Patricia Keller
Mariana Keros
Nancy and Gerd Keuffel
Keuten And Associates LLC
Jennifer King
Mary King
Dan Kinkead
John Klecha
Awilda and Anthony Klee
Liz Klos
Jessica and Bart Kocik
Daniel Kocks
Kate Kohn-Parrott
Roman Kolodchin
Cary Kolodziejczak
Les Koska
Lee Koss
Gust and Susan Kouvaris
David Kozik

Individual and corporate donors

FRIENDS (continued)

KPMG LLP
Kroger Company Community Rewards
James Krone

L

Ronald LaCasse
Jo Jo Lagerstrom
Michael LaHood
Anna Land
Raymond Landsberg
Kevin Langs
Kathleen Laraia
TaKisha LaShore
Gillian Lazar
David Leak
Aubrey Lee
Douglas and Anne Lees
David and Ellen Leitch
Susan Leithauser-Lee
Chantel Lenard
Susan and Carlo Leone
Irene Lewis
Leon Lewis
Brenda and Joe Lewo
Jack Liang
Patrick Lindsey
Peter and Sharleen Longiotti
Mark Lorenger
Gena Love
John Lucas
John Luffy

M

Chris MacKenzie
Vera and Gary Mackey
Sue Malley
Scott Mallon
Steven Marciniak
Charley Marcuse
Esther Marshall
Ronald Marshall
Michael and Diane Marston

Shannan Martinez
Trine Martinez
Lisa Masters
Larry McBride
Laura McDermott
Jacqueline McDougal
Mike McGrath and Christine Anderson
Monika McKay-Polly
Max McKee
Tom and Judy McMahon
Donald and Lila McMechan
Gioconda and James Mcmillan
Mitch McMurren
Sharon and Michael McShane
Mary Mead
Meridian Health Plan
Laura Mesner
Jean and Dave Miller
Joan and Rex Miller
Rita Miller
Theresa Miller
Timothy Miller
Nicole Mitchell
Mary Jane and L. William Moll
Karen Moncrieff
Donna Monk
Jim and Janet Montgomery
Jalona Moore
Robert Moore
Roy and Jill Moore
Janet Morton
Matt Mosher
Richard Mosteller
Carol Mroue
Hillary Mulka
Taylor Mulka

N

Anwar Najor-Durack
Gloria Nastas
David Nathan
Neighborhood Legal Services Michigan

Laticia Nelson
Tim Nelson
Anita Nesby-Flowers
Network For Good
Carlynn Nichols
Doreen Nied
Tim and Linda Nielsen
Sherry Noble
Kathleen Norton-Schock

O

William and Tina O'Connor
Office Max Distribution Center
Megan O'Neil
Donna Orbouch
Scott Orhan
Mark Ostach
Denise Oughton
Mary Owen

P

Al-Azhar Pacha
Daniel Palmer
David Pankotai
Donna and Jeffery Pardonnet
Archana Parikh
Jennifer and Joseph Parke
Jim Parks
Hemali Patel
Henry and Betsy Patterson
William Patterson
Erin Pavlich
Renee Peck
Susan and Jay Pepper
Lisa and John Peracchio
Melissa Persechini
David Peven
Pfizer Foundation Matching
Gifts Program
PGM, LLC
Michael Philbrick
Cheryl Phillips
Tara Pieronek

Individual and corporate donors

FRIENDS (continued)

Marlynn Pieti
Nicole Pilarski
Wendy Pittman
Diane and James Policelli
Richard Portwood
Ryan Potter
Rich Power
R.L. Palk Company

R

Robert Rahal
Rariden Schumacher Mio
Tami and Scott Rea
Judith Reckker
Dashika Reece
Daniel Reich
George and Irene Reich
Todd Rensi
Denise Reske
Tracey Rettig
Dennis Richardson
Donald Richardson
Kelli Richardson
Ringside Creative
Tamika Risper-Wallace
Barbara and Gerald Rivait
George Robertson
Adrienne Robinson
Celia Robinson
Leslie Robison
Lisa Rocquemore-Ariza
Amy Roth
Maureen Rovas
Nikki Ruddy
Tim Ruokolainen
Kirk Russell
Joanne Ruzza

S

Craig and Charisse Sanders
Marilyn Sanders
Maurice Sanders

David Sanderson
Vijay Sankaran
Edward Santangelo
Amy Saunders
Nick Scavone
Nancy Schlichting
David Schmehl
Joseph Scholl
Robert Scholl
Paul Schwab
Trevor Scott
Brittany Scruggs
Michele H. Sears
Adriana Seaton
Julie and Douglas Semivan
Veda Sharp
Sue Shomsky
Dan Sinclair-Smith
Neil Singal
Orlando Sison
Karen Sleno
Audrey Smith
Joy Smith
Pamela Smith
Sonja Smith
Tanya Smith
Sabra Smith-Brown
Susan Smith-Silverstein
Karen Snow
Phillip Snyder
Joanne Sobeck
Carol Socha
Stacey Soffa
Richard Soranno
Mary Spears
Martha and Richard Speer
St. John Providence Health System
St. Mary of the Hills
Eric Sterling
Jane Stolkey
Bucky Strong
Teresa Sullivan

Frank and Diane Surma
Frank Svehota
Steve Swanson
Victoria Swiencicki
Deborah Swink

T

Table For Eight Detroit, LLC
Terri Tabor Conerway
Tim Teller
Tami Tennant
Ann Teschendorf
James Tesen
Heather Thomas
Ricardo Thomas
David Tillman
Tognum America, Inc.
Joshua Townsend
Gregnicca Triplett
Anjala Trotter
True Group, LLC
Stephanie Tucker-Lwanga
Katrina Turnbow
William and Lynn Turner
Yolanda and Charles Turner
Tammy Tyler
Dr. Angela Tzelepis

U

UBS Matching Gift Program
Ali Ucar
William Ullrich
John Ulrich

V

Brad and Pamela Valka
George and Mary Lou Van Antwerp
Harris Van Cleef
Gerald and Teresa Varani
Tina Varlesi
Carl Vaughn
Anthony and Sheryl Velasco
Nancy Vida
Mark Vincent

Individual and corporate donors

FRIENDS (continued)

Sam Vitale
Janine Vrabel

W

Lynda Wagner
Mark and Fran Wagner
Rodgers Washington
Jessica Wayland
Webasto Roof Systems, Inc.
Shirley Weiner
Rhonda Welday
Dennis and Linda Wells
Mary Whitbread
Lynda White
Toni White

Jodi Whitmore
Jan and Guy Whittington
Richard Widgren
David and Anne Widlak
Daniel and Mary Wiechec
Frances Williams
Linda Williams
Oletha Williams
Cora Willis
Deborah Windey
Wines For Humanity
Donna and Kelton Winnega
Lawrence and Janet Witkowski
Robert and Frances Wolf
Qiana Woodson
Mary-Alice Worrell

Y

Ernie Yoder
Dale Young

Z

Jennifer and James Zaroni
Cindy Zate
E. H. Zeringue

IN-KIND DONORS

ABC Student Transportation, Inc

Janisse Abrams
Cynthia Adams
Advantage Health Centers
Advocates For Women Everywhere
Fayssal Akacem
Christine Alcantara
Millicent Alexander
Deborah Allen
Alpha Kappa Alpha Sorority, Inc.
Lambda Pi Omega Chapter
Alpha Phi Omega - Zeta Pi Chapter Wsu
Amicae Of Highland Park
Arkay-Walker Paint Co.
Avalon Bakery

B

Jake Badalamenti
Nanci and John Ballantyne
Carole Bania
Sharon Barrow
Andy Bayley
Cheryl Bednarz
Belle Tire Corporate Headquarters
Belle-Lee Chessecakes
Dawn Bettcher
Birmingham, Michigan Public Schools
David and Meredith Bowbeer
LaShon Bowers
Deborah Bradford
LaShonda Bradford
Robert Bradley
Samantha Bridges
Cordelia Brown
Cheryl Bruins-Rozier
Cindy Buck
Jennifer and Thomas Buda
James Bushon

C

Tammy Capone
Anthony Carmichael
Brent Carroll
Nancy Carty McDevitt

Nancy Chandler
Suzanne Chandler
Crystal Chapman
Christian Temple Outreach Ministry
Francesca Cinelli
Sana Clark
Sanya and Rodney Clary
Linda Cobb-McClain and John McClain
Comerica Bank
Jacqueline Costa
Costco
Frank and Robin Couzens
Jennifer and Curt Crippes
John Crockett
Kristen Cyrul

D

Willie Dalton
Art Davis
Susan Davis
Decarlo's Banquet & Convention Center
Maria and Alfonso DeFrancisco
Mike Dempsey
Valerie DePoter
Detroit AM Rotary
Detroit Pistons
Ronald Dickerson
Cheryl and Joseph DiMauro
Dior Bridal
Cynthia and Clifford Dirksen
Kathy Dolan
Tyrone Dollison
Domino's Pizza Equipment
Dorothy Riley 189
Michael & Ellen Doyle
Dan Dressler
Richard Dusky
Dynamic Rehabilitation
Amanda Dziurman
Heather Eastman
Epicurean Group

In-kind donors

IN-KIND (continued)

Eton Academy
Eva's Bridal
Ewie Co., Inc.

F

Doretha Farria
Doreen Fava
Karl Fava
Mr. Douglas W. Ferrick
Rosanne and Anthony Ficaro
Fifth Third Bank
Five Dollar Ladies Club
Glen and Lori Flowers
Daniel and Mary Elizabeth Follis
Lindsey Ford Buhl and Thomas Buhl
Ford Retiree Breakfast Club
Tina and Gordon Ford
Nicole Fredericks
Jennifer Frohock Hoffman
The Fruehauf Family
Jennifer and Kenneth Fruehauf

G

Brian Gabriel
Carol Galas
General Electric
Carol and Walter Giles
Deborah and David Gillespie
Colleen Golden
Victoria Grabowski
Charles Green
Beth Greenwalt
Grosse Pointe Hockey Association
Marina Guajardo
Kathy Guarano
Marilyn and Richard Gushee

H

Michelle and C. Kirk Haggarty
Cathleen Haglund
Grant Hanes
Angela and John Hardison

Stephen Harley
Katina Harriet
Hartland High School
Rebecca Hayes
Melissa Hayes-Johnson
Karl Heid
Becky Heindl
Michelle and Jeff Henning
Mark and Janette High
Hogan Lovells Us LLP
Hollingsworth Logistics Group
Charmain Holmes
Nicholas Holmes
Sheila Holmes
Ronald Horne
Hour Media, LLC
Elizabeth and Andrew Housey
Christina Houston
Paul Hoyte
Sue Hren
Huda School
Jennifer Hudson
Laura and Charles Huebner

J

Vanessa Jefferson
Delia Jeter-Walker
Krystal Johnson
Marquita and Rapheal Hawkins
Carmen Jones-Malone
Just Baked

K

Inga Kamis
Barbara and Dexter Kennedy
Tripp Kennedy
Bill Kerstetter
WanChuan Kesler
Carol Kessler
Stacy Kilburn
Kloka Design Group
Patty Kloka
Liz Klos

James Knittel
Carolyn Koblin
Lucretia Kocis
Mary Jo Koenigbauer
Nicole Kokoszki
Kroger

L

Laney's Little Lambs
Kyle Langlois
Sheri Laufer
Charlotte Lawrence
Rachelle Ledbetter
Karen Ledford
Laneisha Lewis
Wilhelmina Lewis
Victoria and Robert Liggett
Timothy Lipscomb
Emigh and Brian Litch
Lucki's Cheesecakes
Sarah Luevanos

M

M.D.S. Devine Counseling Services
Thad MacKrell
Marilynn and Gregory Magreta
Ralph and Valerie Maltese
Elizabeth Mansour
Mario's Restaurant
Market Strategies
Judith and Charles Mathews
Erin Mazurek
Kenneth McAllister
Larry McBride
Gioconda and James Mcmillan
Sarita Mehta
Meijer
April Merta-Lunsford
Metro Riverfront Optimist Club
MetroPCS-Corporate Offices
Microsoft Corporation
Christine Miller
Muffy and Edward Milligan

In-kind donors

IN-KIND (continued)

Dawn Mills
Robin & Mike Montagne
Tamika Montgomery
Nora and Manuel Moroun
Mumby's Pies
Josephine and Sam Munaco
Maurita Mussawwir
My Sister Circle

N

National Society Of Black Engineers
Paul Nehra
Nestle Direct Store Delivery Division -
Edy's Ice Cream
Northridge Church

O

Office Max Distribution Center
Margie & Thomas Ogden
Omega Psi Phi Fraternity, Inc.
Scott Orhan

P

Al-Azhar Pacha
Agnesa Papazyan
Parade Company
Clair Parnell
Vince Passalacqua
Hemali Patel
Jocelyn Paulino
Lorrie Peck
Nancy Pelc
Susan and Jay Pepper
Emmanuel Pervolarakis
Karin and Scott Phillips
Marcia Phillips
Michael Polich
Renee Prewitt
Angela Price
PricewaterhouseCoopers, LLP
Professional Bull Riders, Inc.
PwC Ford Engagement Team

Q

Quicken Loans

R

Ruben Ramirez
Jennifer Ramos
Diane Ramsey
Rapid 2 Way Radio
Susan Raudabaugh
Shirley Richardson
Ricoh Services
Ringside Creative
Frederick and Elizabeth Rinke
Sherry Robinson
Maria Rodriguez
Shelley Rusinek
Amy Russell

S

Sam's Club
Maurice Sanders
Chuck Sandison
Abby Sangmeister
Linda and Gregory Schaden
Patricia Schaden
Schechter Benefits Advisors
Donald Schmaltz
Cindy and Robert Schmidt
Paula Seeley
Audra Seltzer (Sanford)
La'Chana and Sekou Seydi
John Shaouni
Shatila Bakery
Benita Shaw
Shrine High School
Mike Silverstein
Slow's To Go
Andy Smith
Crystal T. Smith
Simone Smith
DeSheryl Smith-Whitt
Holly Snell
Sole Sisters Detroit

Holly Soranno
Sorella's Cakes
Carmen Spencer
Jodi and Daniel Spitz
St. John Providence Health System
Patrick Stanard
Star Trax
Aminah Steger
Raymond Stephen
Elaine Stermer
Nancy Stermer
Success Foundation
Summit Polymers, Inc.
Theodore and Amie Sweeney

T

Table For Eight Detroit, LLC
Target
Target - Novi
Tau Beta Association
Team Detroit
Steven Tengler
Christy Thaxton
Patricia Thomas
Traffic Jam and Snug of Michigan, Inc
Micah Trammell
Treats by Angelique
Triumph Baptist Church
Anjala Trotter
David Turner
David Turnwald

U

UDM CBA Alumni Board
Julie Updyke

V

Linda and Gerald Valka
Craig Van Raemdonk
Nancy Vida
Visteon African Ancestry Network

W

Celia and Steve Wade

In-kind donors

IN-KIND (continued)

Edna Walker

Mary Ward

Christine and Sheldon Wardwell

Warner Norcross & Judd

Waste Management Of Michigan

Regina Watson

Rachel Weakley

Julie West

Westin Book Cadillac

Florencine Whitney

Sharon Williams

Barton Witters

Lynn and C. Levering Wood

Margaret and John Woodhouse

Y

Maria Young

Z

Nancy Jo Zeoli

Zeta Phi Beta Sorority, Inc.

Theta Xi Chapter

Ruth and Frank Zinn

Honor and memorial tribute donations

*In memory of Mr. Anthoni Bedway
from Mary Lu Angelilli*

*In memory of Mr. Anthoni Bedway
from Marla G. Bartoi*

*In memory of Mr. Anthoni Bedway
from Marquita Bedway & Al LaHood*

*In memory of Mr. Anthoni Bedway
from Michael and Kara Brooklier*

*In memory of Mr. Anthoni Bedway
from Michael LaHood*

*In memory of Mr. Anthoni Bedway
from Lisa and John Peracchio*

*In honor of Mrs. Carol Bosche
from Irene Lewis*

*In memory of Mr. Frank Couzens, III
from Maximillian and
Alexandra Akemann*

*In memory of Mr. Frank Couzens, III
from Robert and Alicia Baker*

*In memory of Mr. Frank Couzens, III
from Robert E. Baker*

*In memory of Mr. Frank Couzens, III
from Nanci and John Ballantyne*

*In memory of Mr. Frank Couzens, III
from Bemis Elementary School*

*In memory of Mr. Frank Couzens, III
from Benmar & JD Warehouse*

*In memory of Mr. Frank Couzens, III
from Sarah Cantu*

*In memory of Mr. Frank Couzens, III
from William Cook*

*In memory of Mr. Frank Couzens, III
from Correll Associates*

*In memory of Mr. Frank Couzens, III
from Kerry and Diane Dillard*

*In memory of Mr. Frank Couzens, III
from John and Alicia Donovan*

*In memory of Mr. Frank Couzens, III
from The Hill PTO*

*In memory of Mr. Frank Couzens, III
from Lee & Jane Juett*

*In memory of Mr. Frank Couzens, III
from Jennifer L. King*

*In memory of Mr. Frank Couzens, III
from Gust and Susan Kouvaris*

*In memory of Mr. Frank Couzens, III
from Chantel Lenard*

*In memory of Mr. Frank Couzens, III
from Chris MacKenzie*

*In memory of Mr. Frank Couzens, III
from Donna Monk*

*In memory of Mr. Frank Couzens, III
from Trevor Scott*

*In memory of Mr. Frank Couzens, III
from Julie and Douglas Semivan*

*In memory of Mr. Frank Couzens, III
from Tammy Tyler*

*In memory of Mr. Frank Couzens, III
from John Ulrich*

*In honor of the Holiday Season and
memory of Tenille Hands
from Heath Cook*

*In honor of the Holiday Season and
memory of Linda Hicks
from Joseph Scholl*

*In memory of Ms. Gloria Kahn
from Robert & Hazel Karbel*

*In honor of Mr. and
Mrs. Robert A. Karbel
from Alissa Karbel*

*In honor of Mr. and
Mrs. Robert A. Karbel
from UBS Matching Gift Program*

*In honor of Mrs. Debora Matthews
from Irene Lewis*

For a brighter
future Detroit,
we're helping
our children
heal, grow
and thrive.

THERE
IS MUCH
HEALING
TO BE
DONE





JOIN US

The Children's Center
79 Alexandrine West
Detroit, Michigan 48201
(313) 831-5535 Direct
(313) 262-0906 Fax

TheChildrensCenter.com

LIT. NO. 093013-1107-01

#HealChildrenHealDetroit

